

Plan.  
Save.  
Thrive.

ENHANCE  
YOUR IMPACT  
AND YOUR  
SAVINGS



Envu Early  
Order program

**From October 1 to December 6, 2024, save in 5 different ways:**

Off-invoice discounts, select product rebates, agronomic pairing incentives, Specticle Loyalty Bonus, FALL Purchase Tier Rebates

**June 6, 2025, payment terms on Fall Solutions Agency purchases**

**Easily calculate your savings**

Visit [rewards.envu.us](https://rewards.envu.us) to enroll in our benefits-filled Rewards Program, plus download an easy-to-use calculator spreadsheet

It's no secret that the healthier your turf is, the better it stands up against stressors like traffic, weather, disease and pests. That's why at Envu, we're focused on providing you solutions that not only treat your turf, but help fortify its overall health above and below ground.



Sign up for My Envu Rewards. Visit [rewards.envu.us](https://rewards.envu.us)

# Master the unpredictable by staying ahead of it



Green Solution Team Agronomic Program Recommendations	Products	Minimum Qty	Rate 2 (oz/1000)	Acres Treated	Pairing Rebate**† (per unit)	Select Rebate**† (per unit)	Total Invoice*	Max Savings w/9% Purchase Tier**†
<b>Greens Health</b> A "one-two" punch for Pythium diseases. Helps control Pythium Root Rot, foliar Pythium, and summer decline.	<b>Banol®</b>	2	2	7.3	\$75	\$25	\$7,135.20 w/Signature XTRA"	20%
	<b>Signature™ XTRA OR Chipco® Signature</b>	24 OR 12	4	12.1	\$10		\$6,933.60 w/Chipco Signature"	17%
<b>Snow Mold/Utility</b> Consistent, industry-leading snow mold control plus the benefit of early spring green-up from Stressgard formulations.	<b>Interface® Stressgard</b>	6	4	11.0	\$25	\$25	\$3,940.00	25%
	<b>Mirage® Stressgard</b>	2	1	14.7	\$25			
<b>Fairway Health</b> Dynamic Fairway Solution for mid-summer stress.	<b>Tartan® Stressgard</b>	6	1.5	29.4	\$30	\$20	\$11,496.00	22%
	<b>Exeris® Stressgard</b>	16	4	29.4	\$45			
<b>Fairy Ring</b> Master Fairy Ring and other turf diseases.	<b>Resilia™ Root Health Solution</b>	4	4	8.0	\$30		\$5,741.48	12%
	<b>Tartan Stressgard</b>	2	2	7.3		\$20		

ADD any of the products below to the pairings above for even better performance

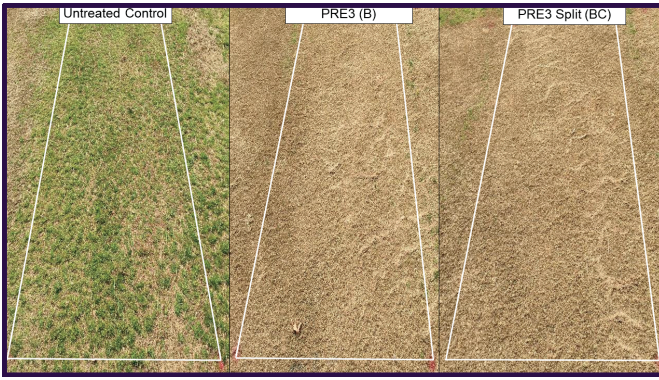


Products	Minimum Qty	Rate 2 (oz/1000)	Acres Treated	Pairing Rebate**† (per unit)	Select Rebate**† (per unit)
<b>Resilia Root Health Solution</b>	4	4	8	\$30	
<b>Densicor®</b>	4	0.196	23.9	\$35	\$35
<b>Castlon™ (1 gal.)</b>	1	0.18	16.3	\$50	

Note: If Resilia is added to Fairy Ring Pairing, no additional rebate is paid.

Additional Recommendations	Products	Minimum Qty	Rate 2 (oz/1000)	Acres Treated	Pairing Rebate**† (per unit)	Select Rebate**† (per unit)	Total Invoice*	Max Savings w/9% Purchase Tier**†
<b>MiraCast</b> A foundation for control of foliar and soilborne diseases and plant health.	<b>Castlon</b>	1 (1 gal. jug)	.09 - .36 fl. oz.	8.16 @ 0.36 fl.oz.			\$3,088.00	10.6%
	<b>Mirage Stressgard</b>	1 (2.5 gal. jug)	1 - 2 fl.oz. 0.6 fl. oz.	7.35 @ 1 fl.oz. 12.2 @ 0.6 fl.oz.*	\$50			

\*See 0.6 fl.oz. for warm season greens for Mirage Stressgard 2(ee) recommendation for use directions



## PRE3: Stay ahead of *Poa annua* and Save



Applying the PRE3 program in late fall provides proactive resistance management for maximum control of *Poa annua* across fairways and roughs all season long. Program is a tank mix of three sites of action Specticle FLO + Tribute Total + simazine. Earn rebates and save with Specticle FLO 1-6 unit price **\$100 lower** than in-season.

Additional Recommendations	Products	Minimum Qty	Rate 2 (oz/1000)	Acres Treated	Pairing Rebate**†	Select Rebate**†	Total Invoice*	Max Savings w/ 9% Purchase Tier***†
PRE3	Specticle FLO	2	0.138	42.6	+ Specticle Bonus see reverse		\$6,418.40	6.3%
	Tribute Total	6	0.023	35.9		\$30		

	Size	Qty	EOP Price*	Select Product Rebate**†	Available Pairing Rebate**†	Select, Pairing and Volume Discount Savings %***†	Saving % + Max Purchase Tier Rebate (9%)****†
<b>Fungicides</b>							
Banol®	2.5 gal. jug	1	\$1,254.00	\$25 (2 or more)	\$75	8%	17%
Chipco Signature Stressgard	11 lb. bottle	1 to 8	\$392.80		\$10	0%	9%
		9+	\$368.80			9%	17%
Castlon	1 gal. jug	1	\$2,600.00		\$50	2%	11%
Castlon	1 pint bottle	1	\$366.50			0%	9%
Densicor	51 fl. oz. bottle	1	\$739.60	\$35 (1 or more)	\$35	9%	18%
Exteris Stressgard	2.5 gal. Jug	1	\$366.00		\$45	12%	21%
Fiata® Stressgard	2.5 gal. Jug	1	\$190.00	\$8 (10 or more)		4%	13%
Interface Stressgard	2.5 gal. jug	1 to 5	\$561.00			0%	9%
		6+	\$494.00	\$25 (6 or more)	\$25	21%	29%
Mirage Stressgard	2.5 gal. jug	1	\$488.00		\$75	15%	24%
Resilia	2.72 gal. jug	1	\$918.87		\$30	3%	12%
Signature XTRA Stressgard	5.5 lb. bottle	1 to 23	\$210.40		\$10	0%	9%
		24+	\$192.80			13%	21%
Tartan Stressgard	2.5 gal. Jug	1 to 5	\$1,033.00	\$20 (2 or more)		2%	11%
		6+	\$940.00		\$30	12%	20%
<b>Insecticides/Nematicides</b>							
Altus®	64 oz. jug	1 to 15	\$428.40			0%	9%
		16 to 31	\$406.98			5%	14%
		32+	\$385.56			10%	18%
Indemnify®	17 oz. bottle	1 to 2	\$1,963.60			0%	9%
		3+	\$1,767.20			10%	18%
Tetrino	1 gal. jug	1	\$498.00	\$25 (4 or more)		5%	14%



Tetrino is proven to offer protection from one of the most difficult turf pests to manage: the annual bluegrass weevil. Studies have shown it's highly effective when applied in late April to early June after eggs hatch and then applied for a second time in early to mid-July after second-generation eggs hatch.

**Save \$25 per bottle with 4+ purchase during EOP\*\*†**



Herbicides					Specticle Loyalty Bonus Pairing			Saving % + Max Purchase Tier Rebate (9%)****†	
Celsius®	10 oz. bottle	1	\$128.40	\$10 (8 or more)	Add Select Rebate quantities of Celsius, Celsius XTRA, Revolver and Tribute Total to Specticle FLO purchase and receive the bonuses below on all eligible brands purchased.			17%	
Celsius XTRA	10 oz. bottle	1	\$166.40	\$10 (8 or more)				15%	
Revolver®	87 oz. bottle	1	\$758.00	\$35 (4 or more)				13%	
Tribute Total	6 oz. bottle	1	\$413.60	\$30 (6 or more)				16%	
					Savings off in-season 1 unit price*	Add 1 Brand	Add 2 Brands	Add 3+ Brands	Saving + Max Loyalty Bonus****† Specticle FLO counts towards purchase tier, but only paid Loyalty Bonus
Specticle FLO	1 gal. jug	1 to 6	\$1,968.40	5%	0.25%	0.50%	1%	6.0%	
		7 to 13	\$1,895.88	8.5%	0.50%	1%	2%	10.3%	
		14 to 25	\$1,657.60	20%	0.75%	1.50%	3%	22.4%	
Other Herbicides									
	Size	Qty	EOP Price*	Select Product Rebate**†	Available Pairing Rebate**†	Select, Pairing & Vol. Discount Savings %****†	Savings % + Max Purchase Tier Rebate (9%)****†		
Ronstar® FLO ◇	2.5 gal. jug	1 to 11	\$ 552.00			0%	Purchases count towards NOW/Fall rebate tier but do not receive a rebate		
		12 to 39	\$ 453.00			18%			
		40+	\$ 393.00			29%			
Specticle G	50 lb. bag	1	\$ 128.00	\$11.50 (20 or more)		9%	18%		
Non-Agency									
Fungicides									
26GT®	2.5 gal. jug	1					9%		
Growth Regulator/Herbicides									
Acclaim® Extra	1 gal. jug	1		\$90 (1 or more)			9% plus Select Rebate		
Acclaim Accelerate	.5 gal jug	1		\$2.75					
Acclaim Accelerate	2.5 gal jug	1		\$13.25					
Terradex™ Power Premix	2.5 gal. jug	1		\$11.25					
Revolver	32 oz. bottle	1					9%		
Sencor®	5 lb. jug	1					9%		
Proxy®	2.5 gal. jug	1					Purchases count towards NOW/Fall rebate tier but do not receive a rebate		
Prograss® EC	2.5 gal. jug	1							
Insecticides									
Chipco Choice ◇	50 lb. bag	1					9%		
Dylox® SL420	2.5 gal. jug	1					9%		
Forbid®	8 oz bottle	1					9%		
Merit® 75 WSP	4 x 1.6 oz	1					Purchases count towards NOW/Fall rebate tier but do not receive a rebate		
Merit 2F	1 gal. jug	1							
TopChoice® ◇	50 lb. bag	1							

Total Purchases (NOW/Fall Solutions)*	Base Incentive** †	August 1-October 31 Bonus**†	Base + Bonus**†
\$5,000 - \$13,999	3%	1%	4%
\$14,000 - \$22,499	4%	1%	5%
\$22,500 - \$31,499	5%	1%	6%
\$31,500 - \$39,999	6%	1%	7%
\$40,000 - \$48,499	8%		8%
\$48,500	9%		9%



### Easily Calculate Your Savings.

Visit [rewards.envu.us](https://rewards.envu.us) to enroll in our rewards program and download an easy-to-use calculator spreadsheet. Scan to the QR code to the left.

\*Pricing for all states except CA or WA. Must be purchased on a single invoice to receive volume discount price. \*\*Must be registered in My Envu Rewards and accept current Terms and Conditions to participate. \*\*\*Savings compared to 1 unit at the National price. †Customer Fall Solutions and NOW Solutions promotional cumulative purchases (Aug. 1 - Dec. 6, 2024) must be \$5,000 or more to qualify for program rebates. Purchase tier amount credited for non-agency products is predetermined by Envu and subject to change without notice. New members signed up before Dec. 31, 2024, will receive 2024 NOW/Fall Solutions rebates. All rebates for 2024 NOW/Fall Solutions will be paid in points, which can be redeemed for thousands of catalog items, distributor credits and/or company checks (no checks can be issued to a third party). All products must be invoiced between Oct. 1 and Dec. 6, 2024, to qualify for Fall Solutions. Rebate calculations will be based on the date of actual product invoice and calculator tools are provided for estimation purposes only. Rebates will only be paid or delivered to the company or name listed on the invoice. Please allow for rebates to be fulfilled by July 31, 2025. End users are only eligible for one Envu incentive program on these invoiced products. Must be an end user with MER membership and accept current Terms and Conditions. Resale of product(s) purchased within this program will not qualify for rebates. If questions arise, please contact MER at 1-888-456-6464 or email [info@myenvurewards.com](mailto:info@myenvurewards.com). Envu reserves the right to modify any portion thereof, or discontinue this program without prior notice.

◇ TOPCHOICE, CHIPCO CHOICE AND RONSTAR FLO ARE RESTRICTED USE. For retail sale to and use only by Certified Applicators or persons under their direct supervision and only for those uses covered by the Certified Applicator's certification.

**ALWAYS READ AND FOLLOW LABEL INSTRUCTIONS.** Environmental Science U.S. LLC, 5000 CentreGreen Way, Suite 400, Cary, NC 27513. Not all products are registered in all states. Envu, the Envu logo, 26GT, Acclaim, Altus, Banol, Castlon, Celsius, Chipco, Densicor, Dytox, Fiata, Forbid, Indemnify, Interface, Merit, Mirage, Prograss, Proxy, Resilia, Revolver, Ronstar, Sencor, Signature, Specticle, Tartan, Terradex, Tetrino, TopChoice and Tribute are trademarks owned by Environmental Science U.S. LLC or one of its affiliates. ©2024 Environmental Science U.S. ES-0824-GLF-335-P-R1

**Plan.  
Save.  
Thrive.**

ENHANCE  
YOUR IMPACT  
AND YOUR  
SAVINGS



Envu Early  
Order program

**From October 1 to December 6, 2024, save in 5 different ways:**

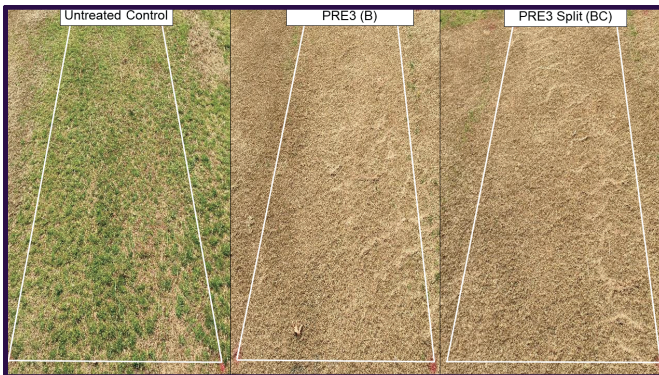
Off-invoice discounts, select product rebates, agronomic pairing incentives, Specticle® Loyalty Bonus, FALL Purchase Tier Rebates

**June 6, 2025, payment terms on Fall Solutions Agency purchases**

**Easily calculate your savings**

Visit [rewards.envu.us](https://rewards.envu.us) to enroll in our benefits-filled Rewards Program, plus download an easy-to-use calculator spreadsheet

Green Solution Team Agronomic Program Recommendations	Products	Minimum Qty	Rate (oz/1000) <sup>2</sup>	Acres Treated	Pairing Rebate**†	Select Rebate**†	Total Invoice*	Max Savings w/9% Purchase Tier***†
<b>Greens Health</b> A "one-two" punch for Pythium diseases. Helps control Pythium Root Rot, foliar Pythium, and summer decline.	<b>Banol®</b>	2	2	7.3	\$75	\$25	\$7,315.14 w/Signature XTRA"	20%
	<b>Signature™ XTRA OR Chipco® Signature</b>	24 OR 12	4	12.1	\$10		\$7,108.74 w/Chipco Signature"	17%
<b>Snow Mold/Utility</b> Consistent, industry-leading snow mold control plus the benefit of early spring green-up from Stressgard formulations.	<b>Interface Stressgard</b>	6	4	11.0	\$25	\$25	\$4,039.30	25%
	<b>Mirage® Stressgard</b>	2	1	14.7	\$25			
<b>Fairways Health</b> Dynamic Fairway Solution for mid-summer stress.	<b>Tartan® Stressgard</b>	6	1.5	29.4	\$30	\$20	\$11,786.50	22%
	<b>Exteris® Stressgard</b>	16	4	29.4	\$45			



**PRE3: Stay ahead of *Poa annua* and Save**



Applying the PRE3 program in late fall provides proactive resistance management for maximum control of *Poa annua* across fairways and roughs all season long. Program is a tank mix of three sites of action Specticle FLO + Tribute Total + simazine. Earn rebates and save with Specticle FLO 1-6 unit price **\$100 lower** than in-season.

Additional Recommendations	Products	Minimum Qty	Rate 2 (oz/1000)	Acres Treated	Pairing Rebate**†	Select Rebate**†	Total Invoice*	Max Savings w/ 9% Purchase Tier***†
PRE3	<b>Specticle FLO</b>	2	0.138	42.6	+ Specticle Bonus see reverse		\$6,580.44	6.3%
	<b>Tribute® Total</b>	6	0.023	35.9		\$30		

	Size	Qty	EOP Price*	Select Product Rebate**†	Available Pairing Rebate**†	Select, Pairing and Volume Discount Savings %****	Saving % + Max Purchase Tier Rebate (9%)***†
<b>Fungicides</b>							
Banol®	2.5 gal. jug	1	\$1,285.65	\$25 (2 or more)	\$75	8%	17%
Chipco Signature Stressgard	11 lb. bottle	1 to 8 9+	\$402.72 \$378.12		\$10	0% 9%	9% 17%
Exteris® Stressgard	2.5 gal. Jug	1	\$375.25		\$45	12%	21%
Fiata® Stressgard	2.5 gal. Jug	1	\$194.80	\$8 (10 or more)		4%	13%
Interface Stressgard	2.5 gal. jug	1 to 5 6+	\$575.15 \$506.45	\$25 (6 or more)	\$25	0% 21%	9% 29%
Mirage Stressgard	2.5 gal. jug	1	\$500.30		\$75	15%	24%
Signature XTRA Stressgard	5.5 lb. bottle	1 to 23 24+	\$215.72 \$197.66		\$10	0% 13%	9% 21%
Tartan® Stressgard	2.5 gal. Jug	1 to 5 6+	\$1,059.10 \$963.75	\$20 (2 or more)	\$30	2% 12%	11% 20%
<b>Insecticides/Nematicides</b>							
Altus®	64 oz. jug	1 to 15	\$439.22			0%	9%
		16 to 31	\$417.26			5%	14%
		32+	\$395.30			10%	18%
Indemnify®	17 oz. bottle	1 to 2 3+	\$2013.18 \$1,811.82			0% 10%	9% 18%
		Tetrino®	1 gal. jug	1	\$510.20	\$25 (4 or more)	5%
<b>Herbicides</b>							
						<b>Specticle Loyalty Bonus Pairing</b>	
Celsius®	10 oz. bottle	1	\$131.64	\$10 (8 or more)	Add Select Rebate quantities of Celsius, Celsius XTRA, Revolver and Tribute Total to Specticle FLO purchase and receive the bonuses below on all eligible brands purchased.		17%
Revolver®	87 oz. bottle	1	\$777.14	\$35 (4 or more)			13%
Tribute Total	6 oz. bottle	1	\$424.04	\$30 (6 or more)			16%
<b>Saving % + Max Purchase Tier Rebate (9%)***†</b>							

	Size	Qty	EOP Price*	Select Product Rebate**†	Available Pairing Rebate**†	Select, Pairing & Vol. Discount Savings %****	Savings % + Max Purchase Tier Rebate (9%)***†	
Specticle FLO	1 gal. jug	1 to 6	\$2,018.10	5%	0.25%	0.50%	1%	6.0%
		7 to 13	\$1,943.76	8.5%	0.50%	1%	2%	10.3%
		14 to 25	\$1,699.46	20%	0.75%	1.50%	3%	22.4%
<b>Other Herbicides</b>								
Ronstar® FLO ◇	2.5 gal. jug	1 to 11	\$ 565.95			0%	Purchases count towards NOW/Fall rebate tier but do not receive a rebate	
		12 to 39	\$ 464.45			18%		
		40+	\$ 402.90			29%		
Specticle G	50 lb. bag	1	\$ 131.00	\$11.50 (20 or more)		9%	18%	
<b>Non-Agency</b>								
<b>Fungicides</b>								
26GT®	2.5 gal. jug	1					9%	
<b>Growth Regulator/Herbicides</b>								
Proxy®	2.5 gal. jug	1					Purchases count towards NOW/Fall rebate tier but do not receive a rebate	
Progress® EC	2.5 gal. jug	1						
Revolver	32 oz. bottle	1					9%	
Sencor®	5 lb. bottle	1					9%	
<b>Insecticides</b>								
Chipco Choice® ◇	50 lb. bag	1					9%	
Dylox® 420SL	2.5 gal. jug	1					9%	
Forbid®	8 oz bottle	1					9%	
Merit® 75 WSP	4 x 1.6 oz	1					Purchases count towards NOW/Fall rebate tier but do not receive a rebate	
Merit 2F	1 gal. jug	1						
TopChoice® ◇	50 lb. bag	1						



### Easily Calculate Your Savings.

Visit [rewards.envu.us](https://rewards.envu.us) to enroll in our rewards program and download an easy-to-use calculator spreadsheet. Scan to the QR code to the left.

Total Purchases (NOW/Fall Solutions)*	Base Incentive**†	August 1-October 31 Bonus**†	Base + Bonus**†
\$5,000 - \$13,999	3%	1%	4%
\$14,000 - \$22,499	4%	1%	5%
\$22,500 - \$31,499	5%	1%	6%
\$31,500 - \$39,999	6%	1%	7%
\$40,000 - \$48,499	8%		8%
\$48,500	9%		9%

\*Pricing for California only. Must be purchased on a single invoice to receive volume discount price. \*\*Must be registered in My Envu Rewards and accept current Terms and Conditions to participate. Rebate calculation excludes the California Mill Tax. \*\*\*Savings compared to 1 unit at the National price. †Customer Fall Solutions and NOW Solutions promotional cumulative purchases (Aug. 1 - Dec. 6, 2024) must be \$5,000 or more to qualify for program rebates. Purchase tier amount credited for non-agency products is predetermined by Envu and subject to change without notice. New members signed up before Dec. 31, 2024, will receive 2024 NOW/Fall Solutions rebates. All rebates for 2024 NOW/Fall Solutions will be paid in points, which can be redeemed for thousands of catalog items, distributor credits and/or company checks (no checks can be issued to a third party). All products must be invoiced between Oct. 1 and Dec. 6, 2024, to qualify for Fall Solutions. Rebate calculations will be based on the date of actual product invoice and calculator tools are provided for estimation purposes only. Rebates will only be paid or delivered to the company or name listed on the invoice. Please allow for rebates to be fulfilled by July 31, 2025. End users are only eligible for one Envu incentive program on these invoiced products. Must be an end user with MER membership and accept current Terms and Conditions. Resale of product(s) purchased within this program will not qualify for rebates. If questions arise, please contact MER at 1-888-456-6464 or email [info@myenvurewards.com](mailto:info@myenvurewards.com). Envu reserves the right to modify any portion thereof, or discontinue this program without prior notice. ◇TOPCHOICE, CHIPCO CHOICE AND RONSTAR FLO ARE RESTRICTED USE. For retail sale to and use only by Certified Applicators or persons under their direct supervision and only for those uses covered by the Certified Applicator's certification.

Plan.  
Save.  
Thrive.

ENHANCE  
YOUR IMPACT  
AND YOUR  
SAVINGS



Envu Early  
Order program

**From October 1 to December 6, 2024, save in 5 different ways:**

Off-invoice discounts, select product rebates, agronomic pairing incentives, Specticle® Loyalty Bonus, FALL Purchase Tier Rebates

**June 6, 2025, payment terms on Fall Solutions Agency purchases**

**Easily calculate your savings**

Visit [rewards.envu.us](https://rewards.envu.us) to enroll in our benefits-filled Rewards Program, plus download an easy-to-use calculator spreadsheet

It's no secret that the healthier your turf is, the better it stands up against stressors like traffic, weather, disease and pests. That's why at Envu, we're focused on providing you solutions that not only treat your turf, but help fortify its overall health above and below ground.



Sign up for My Envu Rewards. Visit [rewards.envu.us](https://rewards.envu.us)

# Master the unpredictable by staying ahead of it



Green Solution Team Agronomic Program Recommendations	Products	Minimum Qty	Rate <sup>2</sup> (oz/1000)	Acres Treated	Pairing Rebate**† (per unit)	Select Rebate**† (per unit)	Total Invoice*	Max Savings w/9% Purchase Tier**†
<b>Greens Health</b> A "one-two" punch for Pythium diseases. Helps control Pythium Root Rot, foliar Pythium, and summer decline.	<b>Banol<sup>®</sup></b>	2	2	7.3	\$75	\$25	\$7,184.96 w/Signature XTRA"	20%
	<b>Signature™ XTRA OR Chipco<sup>®</sup> Signature</b>	24 OR 12	4	12.1	\$10		\$6,982.16 w/Chipco Signature"	17%
<b>Snow Mold/Utility</b> Consistent, industry-leading snow mold control plus the benefit of early spring green-up from Stressgard formulations.	<b>Interface<sup>®</sup> Stressgard</b>	6	4	11.0	\$25	\$25	\$3,967.50	25%
	<b>Mirage<sup>®</sup> Stressgard</b>	2	1	14.7	\$25			
<b>Fairway Health</b> Dynamic Fairway Solution for mid-summer stress.	<b>Tartan<sup>®</sup> Stressgard</b>	6	1.5	29.4	\$30	\$20	\$11,576.40	22%
	<b>Exeris<sup>®</sup> Stressgard</b>	16	4	29.4	\$45			
<b>Fairy Ring</b> Master Fairy Ring and other turf diseases.	<b>Resilia™ Root Health Solution</b>	4	4	8.0	\$30		\$5,781.66	12%
	<b>Tartan Stressgard</b>	2	2	7.3		\$20		

ADD any of the products below to the pairings above for even better performance



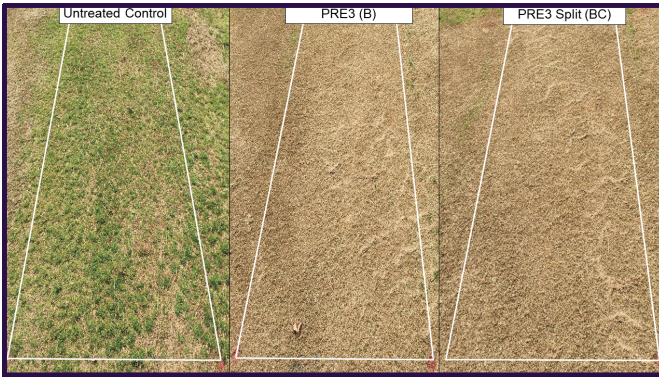
Products	Minimum Qty	Rate <sup>2</sup> (oz/1000)	Acres Treated	Pairing Rebate**† (per unit)	Select Rebate**† (per unit)
<b>Resilia Root Health Solution</b>	4	4	8	\$30	
<b>Densicor<sup>®</sup></b>	4	0.196	23.9	\$35	\$35
<b>Castlon™ (1 gal.)</b>	1	0.18	16.3	\$50	

Note: If Resilia is added to Fairy Ring Pairing, no additional rebate is paid.

Additional Recommendations	Products	Minimum Qty	Rate <sup>2</sup> (oz/1000)	Acres Treated	Pairing Rebate**† (per unit)	Select Rebate**† (per unit)	Total Invoice*	Max Savings w/ 9% Purchase Tier**†
<b>MiraCast</b> A foundation for control of foliar and soilborne diseases and plant health.	<b>Castlon</b>	1 (1 gal. jug)	.09 - .36 fl. oz.	8.16 @ 0.36 fl.oz.			\$3,109.60	10.6%
	<b>Mirage Stressgard</b>	1 (2.5 gal. jug)	1 - 2 fl.oz.	7.35 @ 1 fl.oz.	\$50			
			0.6 fl. oz.	12.2 @ .6 fl.oz.*				

\*See 0.6 fl.oz. for warm season greens for Mirage Stressgard 2(ee) recommendation for use directions





## PRE3: Stay ahead of *Poa annua* and Save



**SPECTICLE®**  
FLO



**TRIBUTE®**  
TOTAL

Applying the PRE3 program in late fall provides proactive resistance management for maximum control of *Poa annua* across fairways and roughs all season long. Program is a tank mix of three sites of action Specticle FLO + Tribute Total + simazine. Earn rebates and save with Specticle FLO 1-6-unit price **\$100 lower** than in-season.

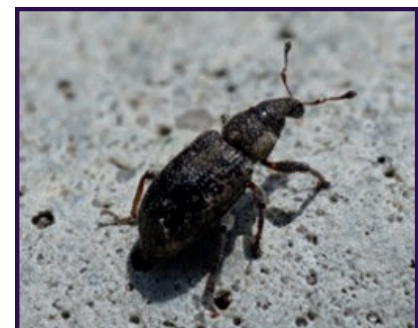
Additional Recommendations	Products	Minimum Qty	Rate 2 (oz/1000)	Acres Treated	Pairing Rebate**†	Select Rebate**†	Total Invoice*	Max Savings w/ 9% Purchase Tier***†
PRE3	Specticle FLO	2	0.138	42.6	+ Specticle Bonus see reverse		\$6,463.36	6.3%
	Tribute Total	6	0.023	35.9		\$30		

	Size	Qty	EOP Price*	Select Product Rebate**†	Available Pairing Rebate**†	Select, Pairing and Volume Discount Savings %***†	Saving % + Max Purchase Tier Rebate (9%)***†
<b>Fungicides</b>							
Banol®	2.5 gal. jug	1	\$1,262.80	\$25 (2 or more)	\$75	8%	17%
Chipco Signature Stressgard	11 lb. bottle	1 to 8	\$395.54			0%	9%
		9+	\$371.38		\$10	9%	17%
Castlon	1 gal. jug	1	\$2,618.20		\$50	2%	11%
Castlon	1 pint bottle	1	\$369.07			0%	9%
Densicor	51 fl. oz. bottle	1	\$744.78	\$35 (1 or more)	\$35	9%	18%
Exteris	2.5 gal. Jug	1	\$368.55		\$45	12%	21%
Fiata®	2.5 gal. Jug	1	\$191.35	\$8 (10 or more)		4%	13%
Interface Stressgard	2.5 gal. jug	1 to 5	\$564.95			0%	9%
		6+	\$497.45	\$25 (6 or more)	\$25	21%	29%
Mirage Stressgard	2.5 gal. jug	1	\$491.40		\$75	15%	24%
Resilia	2.72 gal. jug	1	\$925.29		\$30	3%	12%
Signature XTRA Stressgard	5.5 lb. bottle	1 to 23	\$211.88			0%	9%
		24+	\$194.14		\$10	13%	21%
Tartan	2.5 gal. Jug	1 to 5	\$1,040.25	\$20 (2 or more)		2%	11%
		6+	\$946.60		\$30	12%	20%
<b>Insecticides/Nematicides</b>							
Altus®	64 oz. jug	1 to 15	\$431.40			0%	9%
		16 to 31	\$409.82			5%	14%
		32+	\$388.26			10%	18%
Indemnify®	17 oz. bottle	1 to 2	\$1,977.34			0%	9%
		3+	\$1,779.58			10%	18%
Tetrino	1 gal. jug	1	\$501.48	\$25 (4 or more)		5%	14%



Tetrino is proven to offer protection from one of the most difficult turf pests to manage: the annual bluegrass weevil. Studies have shown it's highly effective when applied in late April to early June after eggs hatch and then applied for a second time in early to mid-July after second-generation eggs hatch.

**Save \$25 per bottle with 4+ purchase during EOP\*\*†**



Herbicides					Specticle Loyalty Bonus Pairing		Saving % + Max Purchase Tier Rebate (9%)*†††	
Celsius®	10 oz. bottle	1	\$129.30	\$10 (8 or more)	Add Select Rebate quantities of Celsius, Celsius XTRA, Revolver and Tribute Total to Specticle FLO purchase and receive the bonuses below on all eligible brands purchased.	17%		
Celsius XTRA	10 oz. bottle	1	\$167.56	\$10 (8 or more)		15%		
Revolver®	87 oz. bottle	1	\$763.30	\$35 (4 or more)		13%		
Tribute Total	6 oz. bottle	1	\$416.50	\$30 (6 or more)		16%		
Other Herbicides								
	Size	Qty	EOP Price*	Select Product Rebate**†	Available Pairing Rebate**†	Select, Pairing & Vol. Discount Savings %***†	Savings % + Max Purchase Tier Rebate (9%)*†††	
Ronstar® FLO ◊	2.5 gal. jug	1 to 11	\$ 555.85			0%	Purchases count towards NOW/Fall rebate tier but do not receive a rebate	
		12 to 39	\$ 456.15			18%		
		40+	\$ 395.75			29%		
Specticle G	50 lb. bag	1	\$ 129.00	\$11.50 (20 or more)		9%	18%	
Non-Agency								
Fungicides								
26GT®	2.5 gal. jug	1					9%	
Growth Regulator/Herbicides								
Acclaim® Extra	1 gal. jug	1		\$90 (1 or more)			9% plus Select Rebate	
Acclaim Accelerate	.5 gal jug	1		\$2.75				
Acclaim Accelerate	2.5 gal jug	1		\$13.25				
Terradex™ Power Premix	2.5 gal. jug	1		\$11.25				
Revolver	32 oz. bottle	1					9%	
Sencor®	5 lb. bottle	1					9%	
Proxy®	2.5 gal. jug	1					Purchases count towards NOW/Fall rebate tier but do not receive a rebate	
Prograss® EC	2.5 gal. jug	1						
Insecticides								
Chipco Choice ◊	50 lb. bag	1					9%	
Dylox® 420SL	2.5 gal. jug	1					9%	
Forbid®	8 oz bottle	1					9%	
Merit® 75 WSP	4 x 1.6 oz	1					Purchases count towards NOW/Fall rebate tier but do not receive a rebate	
Merit 2F	1 gal. jug	1						
TopChoice® ◊	50 lb. bag	1						



### Easily Calculate Your Savings.

Visit [rewards.envu.us](https://rewards.envu.us) to enroll in our rewards program and download an easy-to-use calculator spreadsheet. Scan to the QR code to the left.

Total Purchases (NOW/Fall Solutions)*	Base Incentive**†	August 1- October 31 Bonus**†	Base + Bonus**†
\$5,000 - \$13,999	3%	1%	4%
\$14,000 - \$22,499	4%	1%	5%
\$22,500 - \$31,499	5%	1%	6%
\$31,500 - \$39,999	6%	1%	7%
\$40,000 - \$48,499	8%		8%
\$48,500	9%		9%

\*Pricing for Washington only. Must be purchased on a single invoice to receive volume discount price. \*\*Must be registered in My Envu Rewards and accept current Terms and Conditions to participate. Rebate calculation excludes the Washington Hazardous Waste Tax. \*\*\*Savings compared to 1 unit at the National price. †Customer Fall Solutions and NOW Solutions promotional cumulative purchases (Aug. 1 - Dec. 6, 2024) must be \$5,000 or more to qualify for program rebates. Purchase tier amount credited for non-agency products is predetermined by Envu and subject to change without notice. New members signed up before Dec. 31, 2024, will receive 2024 NOW/Fall Solutions rebates. All rebates for 2024 NOW/Fall Solutions will be paid in points, which can be redeemed for thousands of catalog items, distributor credits and/or company checks (no checks can be issued to a third party). All products must be invoiced between Oct. 1 and Dec. 6, 2024, to qualify for Fall Solutions. Rebate calculations will be based on the date of actual product invoice and calculator tools are provided for estimation purposes only. Rebates will only be paid or delivered to the company or name listed on the invoice. Please allow for rebates to be fulfilled by July 31, 2025. End users are only eligible for one Envu incentive program on these invoiced products. Must be an end user with MER membership and accept current Terms and Conditions. Resale of product(s) purchased within this program will not qualify for rebates. If questions arise, please contact MER at 1-888-456-6464 or email [info@myenvurewards.com](mailto:info@myenvurewards.com). Envu reserves the right to modify any portion thereof, or discontinue this program without prior notice. ◊ TOPCHOICE, CHIPCO CHOICE AND RONSTAR FLO ARE RESTRICTED USE. For retail sale to and use only by Certified Applicators or persons under their direct supervision and only for those uses covered by the Certified Applicator's certification.